

issue #34 • Winter 2009

edited by Alan Soden

Together

IN MINISTRY



ISSN 1443 - 797X

Published by the Baptist Union of NSW for the encouragement of God's people

Our Spiritual Health



**As each part does its own
special work, it helps the
other parts grow...**

Ephesians 4:16b



It aims to touch the hearts, heads and hands of God's people to inspire, encourage and equip followers of Jesus to experience LIFE TO THE FULL - just as Jesus promised.

I have come that they may have life and have it to the full - John 10:10

LIFE

KEY NOTE SPEAKERS

Brian Winslade
Mike Frost

GUEST ARTISTS

Parachute Band
Sons Of Korah
Cameron Semmens

REVIVE 09 PLANNING COMMITTEE

Alan Soden, Andrew Palmer, Brendan Handel,
Frank Farag, Graham Hill, Jackie Beresford,
Jamie Long, Karl Faase, Ken Clendinning,
Kevin Warner, Nadine Newell, Neil Dawson,
Norm Nix, Roslyn McGarvey, Thomas Schmid
& Vivian Grice.

17th - 19th September 2009

SYDNEY OLYMPIC PARK SPORTS CENTRE
HOMEBUSH

Fantastic Kids and Youth events. Quality workshops. Gifted speakers.

Plan to come! Come to be transformed!



For more information and registration visit www.revive.org.au or see your Revive Church rep.



Accounting

A practical course that prepares you for a career in the finance sector



Business

Well-established course that provides the skills and knowledge to progress in the business world



Child Care

Training for one of the fastest growing industries in Australia

All Diploma courses provide you with automatic entry (with credit) into a university degree

We offer

| Caring, Christian environment | Small class sizes - individual attention | Excellent job prospects |
| No UAI required | Ultra modern campus with great facilities |

VET FEE-HELP APPROVED



Bedford College - www.bedford.edu.au

BAPTIST BUSINESS COLLEGE LTD 54 Parramatta Road Glebe 2037 (opposite Sydney University) 02 8572 3260

SEE YOUR **\$1** BECOME **\$4** IN ACTION
UP TO



For every dollar we use from the Matching Grant Fund on approved projects, we may access up to three dollars from an Australian Government grant, giving us four dollars to put into action.*

*Share an opportunity today!
Celebrating 30 Years*

Families living in poverty then reap the benefits of this multiplied donation through life-changing development activities in their community.



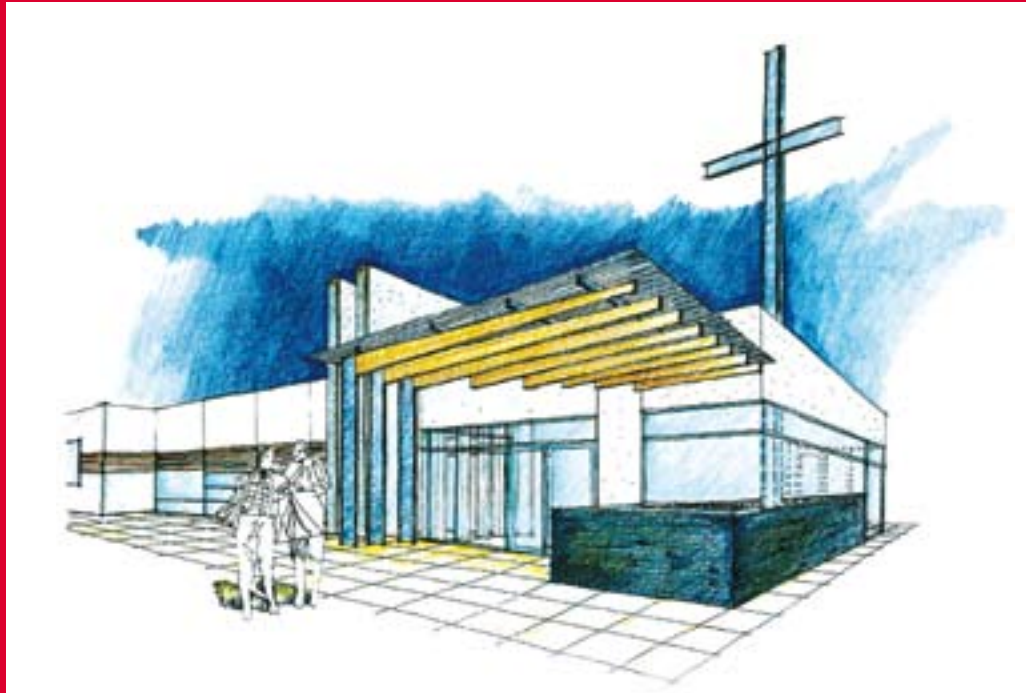
Donations must be received by June 30, 2009. See envelope enclosed in this publication, visit www.shareanopportunity.org or call Baptist World Aid Australia on 1300 789 991.

* Strict conditions determine how funding in this scheme is allocated. See the envelope included for more details



Baptist Investments & Finance Ltd.

ABN 56 002 861 789



Resourcing
Christian ministry
by providing
financial services
of the highest
standard.

We value -

- professionalism with integrity
- friendly co-operative service
- trust and respect in relationships
- responsible use of resources

Join the growing number of churches earning more interest with BIF.

And together, we can support the financing of Baptist ministries.

Term Investments | Terms Available: 3-36 Months | No minimum amount

Loans | Churches & Associated Organisations, Accredited/Ordained Baptist Pastors

Investments At Call | Savings & Cheque Accounts | Interest paid monthly

| Internet Account Access | BPAY | Business & Church Services

phone 1300 650 542 fax 1300 784 699
email info@bif.com.au web www.bif.com.au

The charitable investment scheme and/or Baptist Investments & Finance Ltd is/are not prudentially supervised by the Australian Prudential Regulation Authority; Contributions to the Fund do not obtain the benefit of the depositor protection provisions of the Banking Act 1959; and, The charitable investment scheme is designed for investors who wish to promote the charitable purposes of Baptist Investments & Finance Ltd.